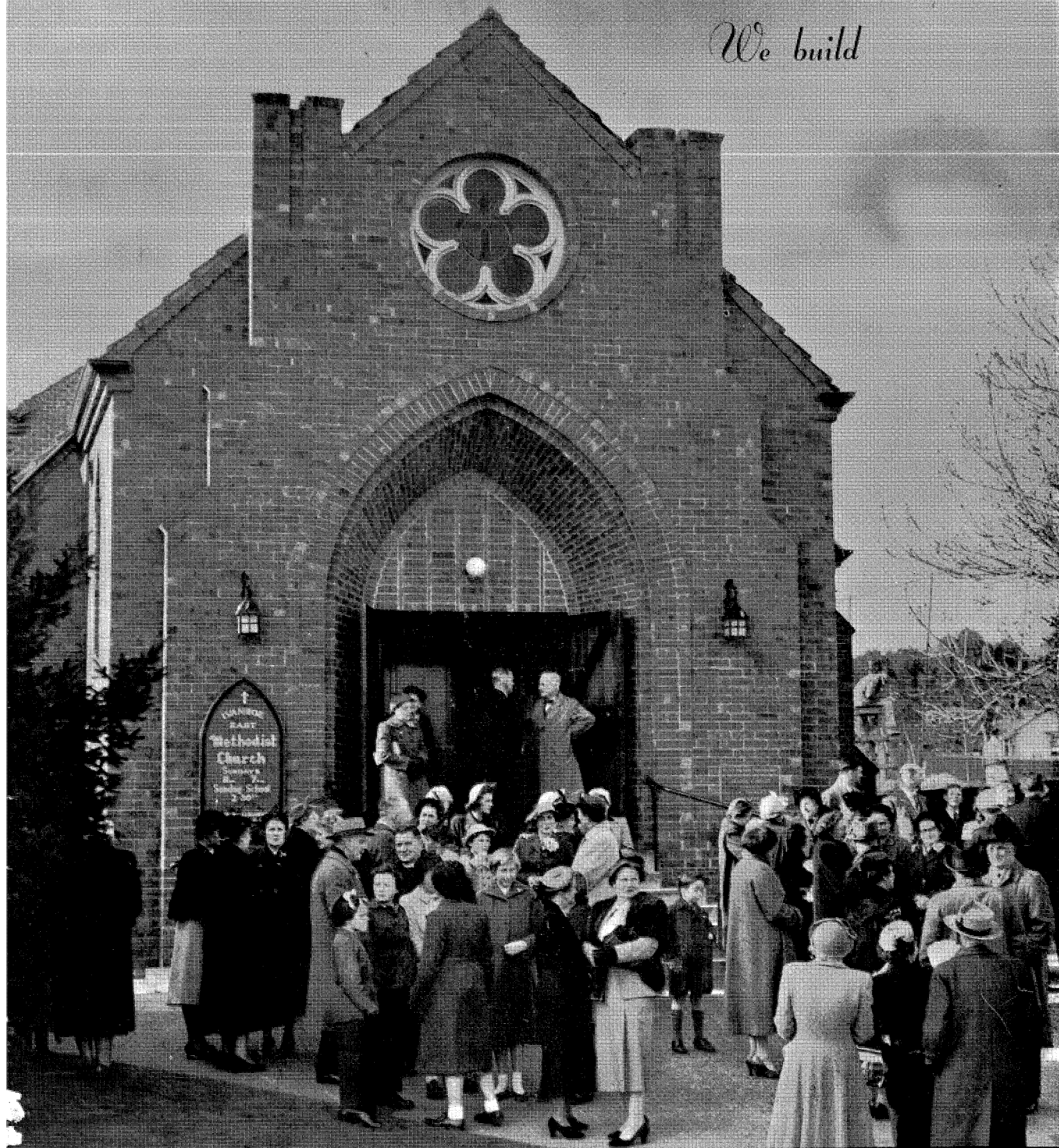


Through
FAITH • PRAYER • SACRIFICE

We build



EAST IVANHOE METHODIST CHURCH
MELBOURNE, VICTORIA, 1955

Dedication

THIS BOOKLET is dedicated . . .

To the men and women and young people of our present congregation whose love of the Church, willing service and generosity maintains the work committed to our hands.

To the precious children of our community whom it is our privilege to serve.

To the unborn generations who will inherit the priceless treasures of our Christian heritage and the responsibilities of the future.

To all who earnestly endeavour to put God first in their lives and who seek to faithfully fulfil the precepts laid down by His Son, our Lord Jesus Christ.

A Message from our Minister

THE REV. J. J. BLAKEMORE

Let me commend this canvass booklet to all people who are served by the East Ivanhoe and Heidelberg Methodist Churches. It will tell you something of what the Church in this area has already done and what it needs to do in the future, if it is to be true to its mission and its Lord.



As a local Christian community at East Ivanhoe, we cannot refer to old traditions nor can we point to the glories and achievements of the distant past. However, we can, with a certain amount of pardonable pride, point to the development which has taken place in our Church in a few short years.

The last few years has seen an amazing influx of people into the district. Out of sheer loyalty to its mission, the Church had to try and meet the religious needs of such a growing community. Provision had to be made for Christian worship, the religious education of children had to be catered for, the needs of young people had to be considered. The industry, generosity and foresight of a few people sought to meet such a challenge and they have given us a suite of buildings and equipment which reflect a determination worthily to honour the name and the Kingdom of God.

To do all that has been done involved going into debt, but no debt was more justified. Now that we have reached the present stage of development, if all our people will give to their Church that which, before God, is their very best, then debts will soon disappear and further essential development will be possible.

At Heidelberg the story is different. There our Church has celebrated its centenary, evidencing a long and faithful witness. But there again, if our folk will give of the wealth which God has lent to them for the years of their life, we shall see a forward move worthy of the followers of Christ in this place.

Pray for the success of this venture and offer, as unto God, your sacrificial best, so that together, we might build well for the future.

J. Blakemore

Our Church

EAST IVANHOE

The East Ivanhoe Methodist Church had a humble beginning in 1930.

Seven Sunday School scholars under the leadership of Mr. Walter Pizzey met regularly in the State School. This group, for the following 11 years, remained part of the Ivanhoe school.

Then a newly formed trust, under the Circuit's Superintendent Minister, the Rev. W. C. Thomas, ventured on the building of our present Church.

The contract price was £1,878.

The then President of the Conference, the Rev. D. Lewis, dedicated the Church on 6th December, 1941, and the East Ivanhoe Sunday School, now with 40 scholars, was established separately from Ivanhoe, with Mr. E. C. Cother as its leader.

The first Ladies' Guild was established the following August. Mrs. T. G. Pizzey was elected president, and Mrs. G. Green, secretary.

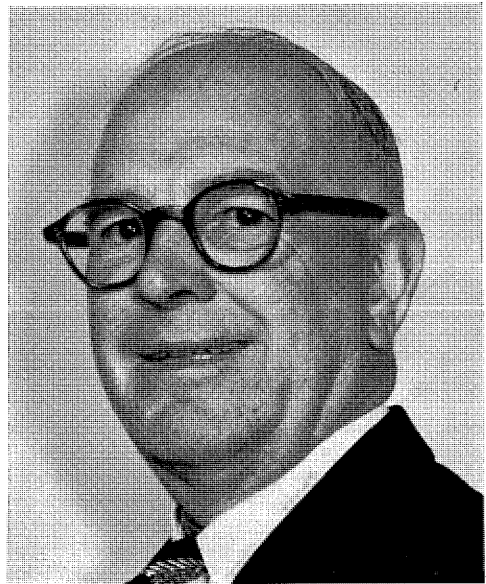
Our hall, costing £10,000, was dedicated in 1953, in time for that year's Sunday School Anniversary on 1st November. For this occasion, 550 people crowded into the new building.

The Sunday School roll now totals 368, and the senior Church members roll 160. Every Saturday, young people—sometimes 100 or more—use the Church property for gymnasium work, basketball and tennis.

The appointment of a resident Minister, Rev. J. J. Blakemore, in April of this year, was a notable step forward, and on 6th August a parsonage was dedicated and opened by the President of the Conference, the Rev. A. W. Pederick. (The home reflects the congregation's loyalty and affection for our spiritual leader and his family.)

The cost of our six blocks of land and buildings, acquired over 14 years, has been £26,000, and a conservative estimate of their cost on present market values would be £40,000.

For all this progress we give thanks to Almighty God.



Mr. W. G. MILES
East Ivanhoe Trust Secretary



Mr. W. A. BEATTIE
Heidelberg Trust Secretary

HEIDELBERG

Methodist Church services were begun in Heidelberg in 1851—first in the open air, then in the local Presbyterian Church, next in the house of Mr. Hobson and then in the shade of the trees on Methodist land until a building was erected in 1859.

The present Church was built in 1895 and moved to its present site in 1912.

Over the years the inspiration of the Heidelberg Church has led to the establishment of a number of other causes in the area, and some of its people have entered wider spheres of service.

The Church's Women's Auxiliary for Overseas Missions has been at work for 26 years, the Ladies' Guild for 24 years and the Men's Society for eight years. The Sunday School has a roll of 100, and there are clubs for boys and girls.

Now it is hoped to erect a new Church, and with the extra space that will then be available, to cater more adequately for the needs of its young people and the growing community on the outskirts of Heidelberg.

It is to bring this worthy vision to reality that the Church embarks on this canvass for funds, and humbly seeks Divine guidance.

Our Greatest Need

We can agree that there is no limit that may be validly placed upon the need of our Church for money. That is why we have undertaken this present canvass.

We shall determine how much money we can, as a Church family, raise, so that we may work more effectively for God.

However, we know that OUR GREATEST NEED is not "how much our Church needs," but rather "HOW MUCH WE NEED TO GIVE."

In our present-day economy there is no question that our interests follow our giving. Of course, it is also true that our giving follows our interests. Increased giving—as has been proved many times over—will develop greatly increased interest in our Church and in our own spiritual lives. Every family should look upon this Combined Funds Canvass as the opportunity to make the greatest sacrifice of their lives for their faith.

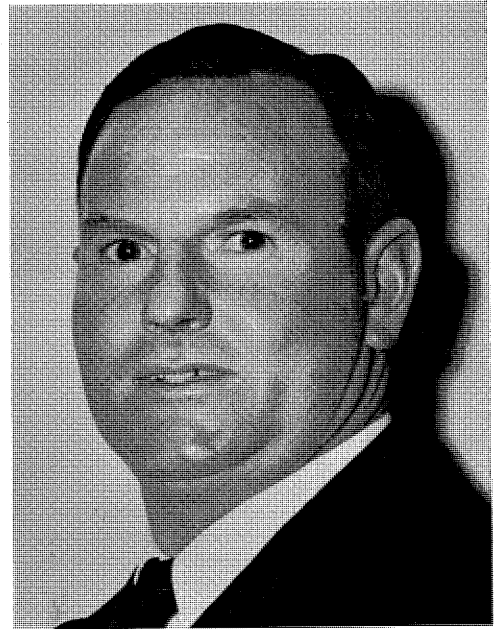
Therefore, our canvass leaders are making every effort to give the lead with generous, sacrificial pledges to inspire all of our families to become better givers. This is a challenge to all of us! It is a call to service and Christian stewardship, which offers each an opportunity to measure up to his Christian obligation and responsibility.

To meet this greatest need, it is imperative that the appeal be to all member-families and all other families who use our Church.

This appeal will be for pledges which will represent HOW MUCH OUR GOD, OUR CHURCH, AND OUR SPIRITUAL LIVES MEAN TO US.

Building on the foundation stones of Faith, Prayer and Sacrifice we are sure to succeed.

We are humbly aware of the honour bestowed on us who have been appointed as leaders in this canvass and we now ask your prayers that in all things we may be guided to do His will.



Mr. G. HOOPER
East Ivanhoe General Chairman



Mr. A. POPPINS
Heidelberg Canvass Committee Chairman



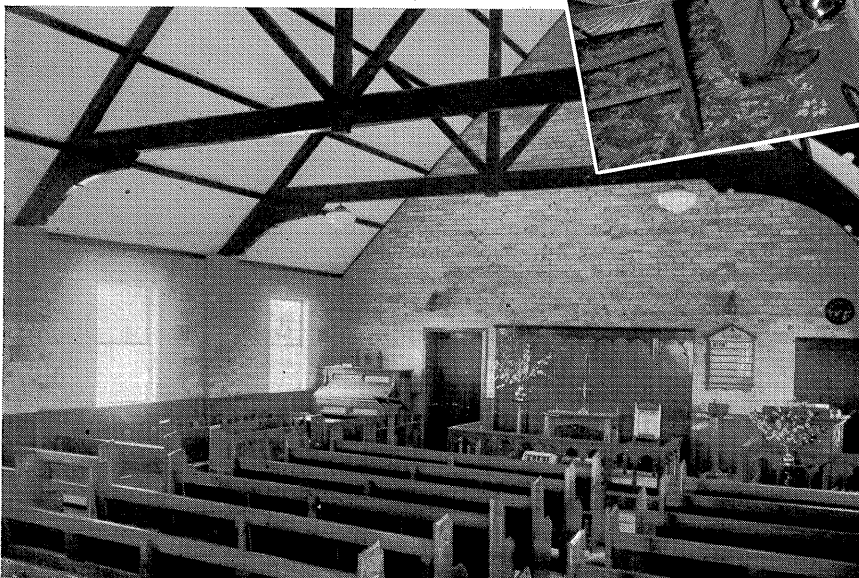
Mr. W. S. PIZZEY
East Ivanhoe Special Gifts Chairman



Worship, Education *at East Ivanhoe Met*

DREAMS THAT HAVE BECO

*It is for this lad that we build
a place of worship
a place to learn . . .*



Recreation Methodist Church

IS A REALITY

a place to find fitness, fun
and fellowship



*The President of the Conference,
the Rev. A. W. Pederick, opening
East Ivanhoe's new parsonage on
Saturday, 6th August, 1955.*



Our Plan to meet our Needs

In order to raise a minimum of £20,00 it has been agreed that we will conduct between now and the 27th August—

AN ORGANIZED

INTENSIVE

INDIVIDUAL

FACE-TO-FACE

SOLICITATION

IN THE HOMES

FOR PLEDGES

PAYABLE WEEKLY

FOR 150 WEEKS

BEGINNING

25th SEPTEMBER, 1955

There is nothing complicated or high pressure about our financial plan. We need the sum of £20,000. We are simply asking that every member and friend of East Ivanhoe Methodist Church set aside a generous and sacrificial portion of their income each week and that they give the Church a true priority on their contributions.

As in East Ivanhoe, so in Heidelberg the call goes out. Here the sum needed is £4,500.

In each case, solicitations will be limited to members, parents of Sunday School children and any other persons and families who consider themselves affiliated with our Church, but who are not technically members.

Our Canvass Organisation

EAST IVANHOE

General Chairman:
Mr. G. HOOPER

Initial Gifts Chairman:
Mr. W. G. MILES

Teams Chairman:
Mr. ALDEN BERRY

Special Gifts Chairman:
Mr. W. S. PIZZEY

Canvass Committee Chairman:
Mr. C. T. OLDMEADOW

Canvass Treasurer:
Mr. W. F. OSBORN



*Members of the East Ivanhoe and Heidelberg Canvass Committee
Planning the Canvass*

HEIDELBERG

Canvass Committee Chairman:
Mr. A. POPPINS

WOMEN AT WORK

The role of the women in our Church life and in a canvass such as this is striking—the measure of their support will strongly influence the extent of family giving. Already our womenfolk are working hard for the success of this adventure in faith.



Mrs. W. S. PIZZEY
Hostess Committee Chairman



Mrs. W. G. MILES
Arrangements Committee Chairman